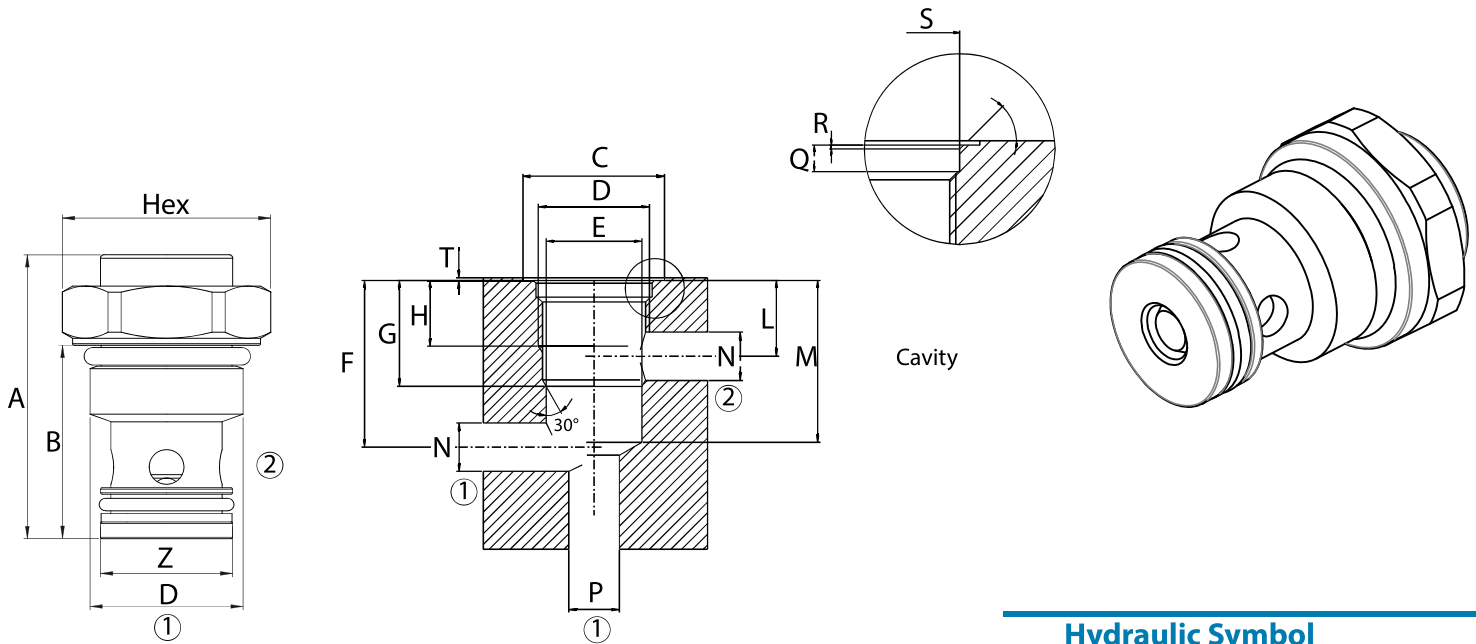
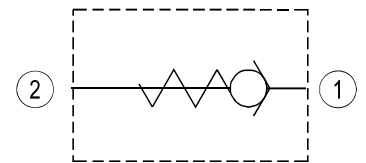


Dimensions

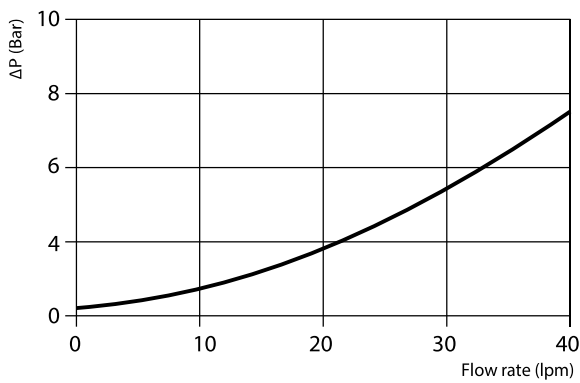


A	B	C	D	E H7	F	G	H	L	M	N max	P max	Q	R	S	T	Z	Hex	Weight kg
34,5	28	28	M22x1,5	Ø19	33	21	13	15	32	9,5	18	3,3	0,5	20,7	0,5	19	27	0,075

Hydraulic Symbol



Curves



Features

Max Flow Rate	40 lpm
Max Pressure	350 bar
Cracking Pressure	0,5 bar
Tightening Torque	50-60 Nm

Materials: Zinc plated steel cartridge, hardened steel poppet.

Ordering Code

CVC40

Ordering Code Example: **CVC40**.