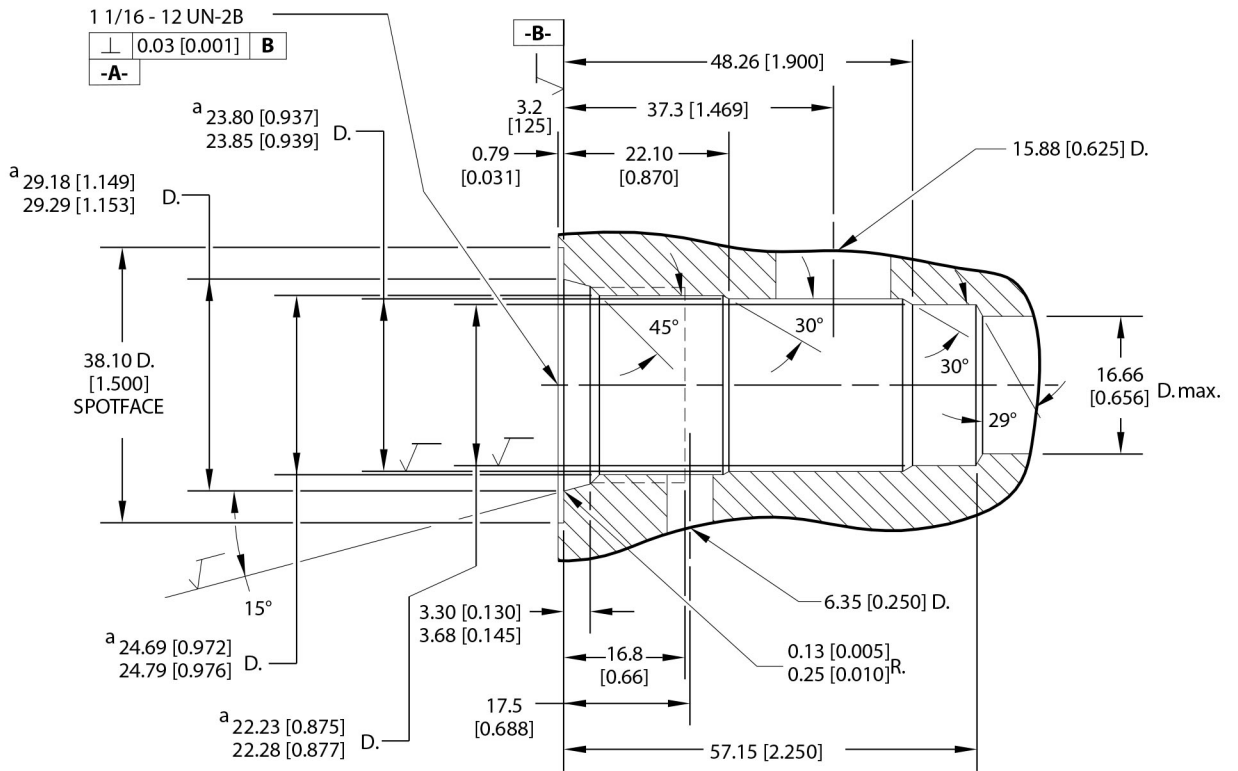


Dimensions

mm [in]



**a**  $\text{Ⓢ}$  .05 [.002] D. A  
 $\text{Ⓢ}$  .03 [.001] B  
 Tolerances (unless otherwise noted)  
 2 place dim.  $\pm$  .25 (0.01)  
 3 place dim.  $\pm$  .13 (0.005)  
 angles  $\pm$  .5  
 All dimensions in mm [inches]

$\sqrt{\quad} = 1.6 [63]$

Form tools

	Model code	Material number
<b>Finishing tool</b>	CP-12-3S-FT	310006
<b>Roughing tool</b>	CP-12-3S-RT	310020

Housings

Order Code	Description	Ports	Page
CP12-3S-10S/4S	Aluminum Housing, Pilot at Port #3	SAE #10, #4	HS - 14
CP12-3S-12S/4S	Aluminum Housing, Pilot at Port #3	SAE #12, #4	HS - 14
CP12-3S-4B/2B	Aluminum Housing, Pilot at Port #3	1/2 BSP, 1/4 BSP	HS - 14
CP12-3S-6B/2B	Aluminum Housing, Pilot at Port #3	3/4 BSP, 1/4 BSP	HS - 14