

## Coils and Electronics

### H series

29W ToughCoil

#### PERFORMANCE DATA

<b>Duty cycle</b>	100% at 110% of rated voltage
<b>Magnet wire insulation</b>	U.L. class N, 200°C [392°F] NEMA pub. No. MW 1000, section MW 35 – C [single]
<b>Ambient temperature</b>	100°C [212°F] continuous @ rated voltage
<b>Input Voltage Range</b>	85% to 110% of rated voltage
<b>UL Rated (certificate available upon request)</b>	

#### ENVIRONMENT PROTECTION

<b>Rating</b>	<b>Connector Type</b>
IP65	G0*
IP67	Y0, W0
IP69K	NO, DO, JO
Thermal shock dunk	W0 <sup>1</sup> , NO, DO, JO

<sup>1</sup>Passed environmental testing, but not as robust as other connectors

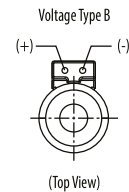
\*Rating dependent on mating connector

#### ELECTRICAL SPECIFICATIONS

Voltage	12 DC	24 DC	115 AC	230 AC
Current (A)	2.42	1.21	0.28	0.14
Power (W)	29	29	29	29

\*Nominal voltage 25°C (77°F).

#### Diode Information



Flyback diode (arc suppressor), maximum recurrent peak reverse voltage - 800V

#### MODEL CODE

MCSC - H - 012 - D - W0 - A - 00 - 10

##### Coil Series

H - Size 10, 12, 16, 20 [350 Bar]

##### Coil Voltage

Code	Coil Voltage
012	12 volt
024	24 volt
115	115 volt
230	230 volt

##### Voltage Type

D - DC  
B - DC/with flyback diode  
A - AC/with full bridge rectifier

##### Lead Length

0 - None  
A - 152mm [6.0 in]  
(Standard length with connector)  
B - 610mm [24.0 in]  
(Standard length without connector)

##### Connector Type

G0 - ISO 4400 DIN 43650  
Q0 - Spade terminals  
W0 - Flying lead  
NO - Deutsch (DC only)  
Y0 - Amp JR (DC only)  
DO - Metripack 150 male (DC only)  
JO - Metripack 280 male (DC only)

#### PART NUMBERS - (300AA00\_\_\_\_\_ - COMPLETE PART NUMBER IS 11 DIGITS)

Voltage	G0** Connector	Q0 Connector	W0 Connector	NO Connector	Y0 Connector	DO Connector	JO Connector
12VDC	121A	129A	135A	141A	146A	151A	156A
24VDC	122A	130A	136A	142A	147A	152A	157A
115VAC	125A	–	–	–	–	–	–
230VAC	126A	–	–	–	–	–	–
12VDC*	127A	133A	139A	144A	149A	154A	159A
24VDC*	128A	134A	140A	145A	150A	155A	160A

\*With flyback diode. (Voltage Type B)

\*\*DIN 43560 mating connector for "G0" style coil – 02-166796 or AXP14116.

# Coils and Electronics

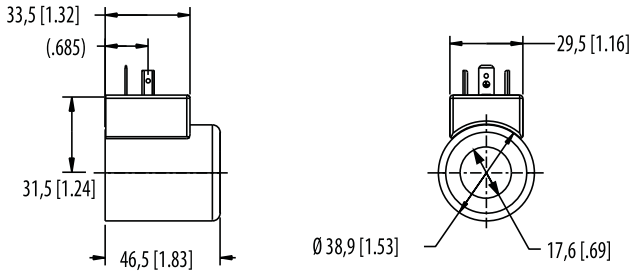
## H series

29W ToughCoil

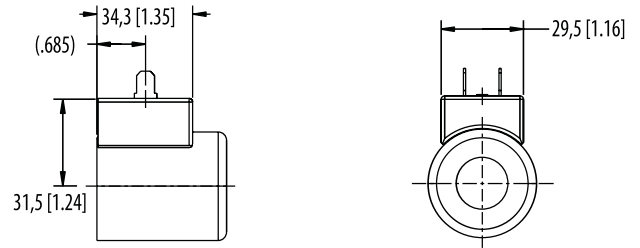
### ■ DIMENSIONS

mm [in]

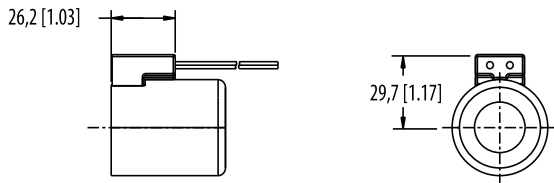
**G0**  
DIN 43650



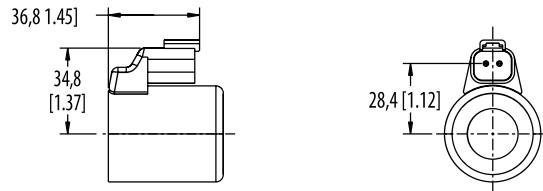
**Q0**  
Spade connector



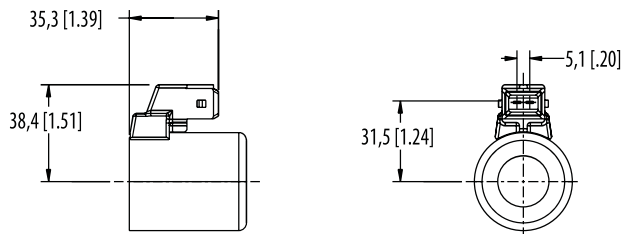
**W0**  
Leadwire



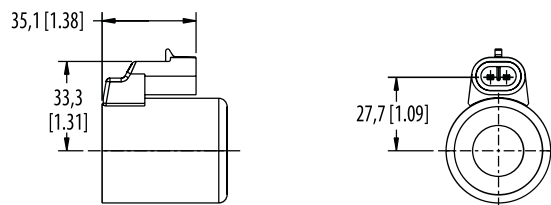
**N0**  
Deutsch male DT04-2P integrated connector



**Y0**  
AMP Junior timer integrated connector



**D0**  
Metri-Pack 150 Male, integrated connector



**J0**  
Metri-Pack 280 Male, integrated connector

