



# Relief Valves Technical Information

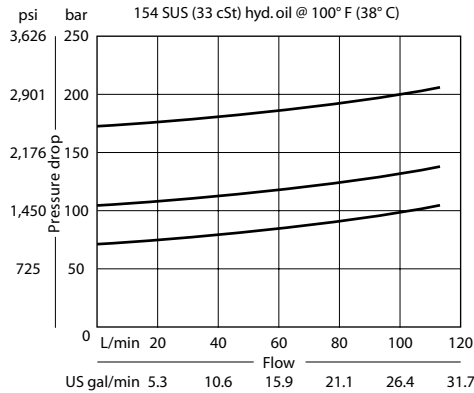
## Pilot Operated CP210-2

### OPERATION

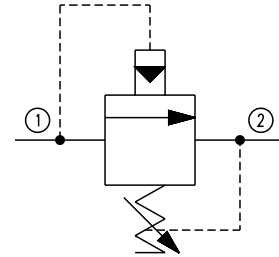
This is a pilot operated spool type relief valve that relieves pressure from 1 to 2.

### SPECIFICATIONS

#### Theoretical performance



#### Schematic

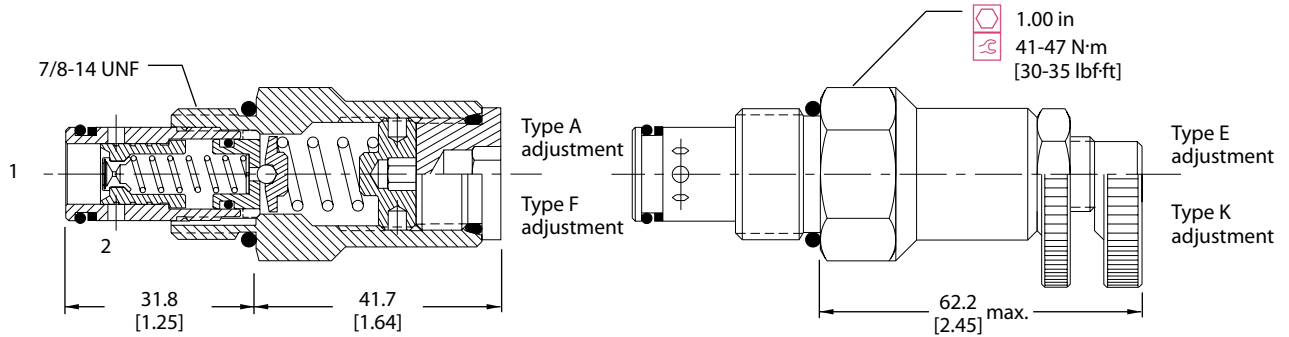


#### Specifications

<b>Rated pressure</b>	350 bar [5075 psi]
<b>Rated flow</b>	115 l/min [30 US gal/min]
<b>Leakage</b>	82 cm <sup>3</sup> /min [5 in <sup>3</sup> /min] @ 207 bar [3000 psi]
<b>Weight</b>	0.18 kg [0.40 lb]
<b>Cavity</b>	<b>SDC10-2</b>

### DIMENSIONS

#### Cross-sectional view



### ORDERING INFORMATION

**CP210 - 2 - B - 6S - A - C - 150**

<b>Seals</b>	B = Buna-N V = Viton	<b>Seal kit</b>	120015 120016
<b>Housing and ports</b>	0 = No Housing DG3B = Al, 3/8 BSP DG4B = Al, 1/2 BSP 6S = Al, #6 SAE 8S = Al, #8 SAE Other housings available	<b>Housing P/N</b>	No Housing SDC10-2-DG-3B SDC10-2-DG-4B CP10-2-6S CP10-2-8S
<b>Adjustment option</b>	A = Internal E = External F = Tamper resistant K = Knob	<b>Crack pressure</b>	Code x 10 = psi Example: 150 = 1500 psi
		<b>Pressure range</b>	bar [psi]
		A =	14-69 [200-800]
		Standard	28 [400]
		B =	14-103 [200-1500]
		Standard	69 [1000]
		C =	28-207 [400-3000]
		Standard	103 [1500]
		D =	28-345 [400-5000]
		Standard	103 [1500]