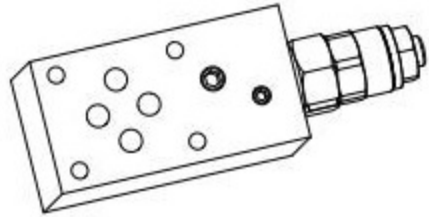
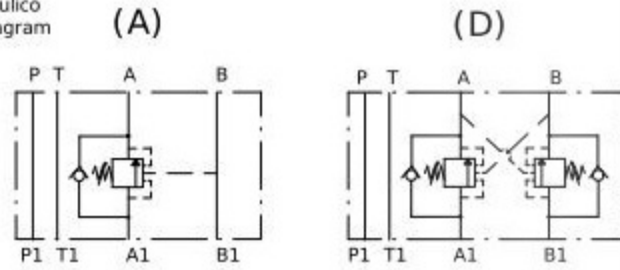


**VALVOLA CONTROLLO DISCESA (OVERCENTER) CETOP 3  
VALVE (OVERCENTER) MODULAR TYPE CETOP 3**



Schema idraulico  
Hydraulic diagram



version **A**

version **D**

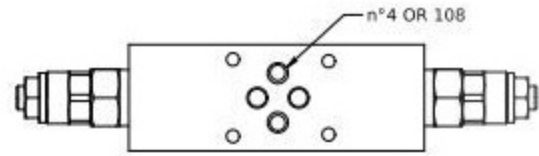
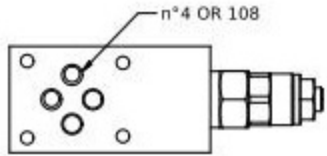
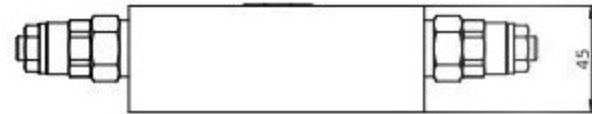
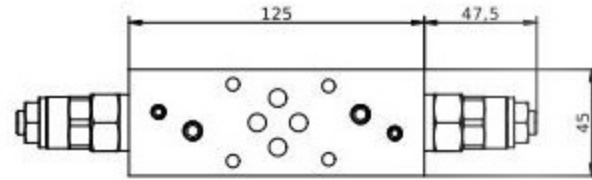
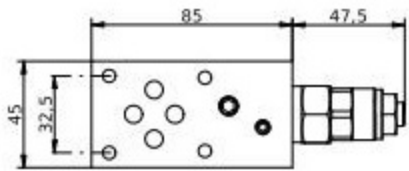
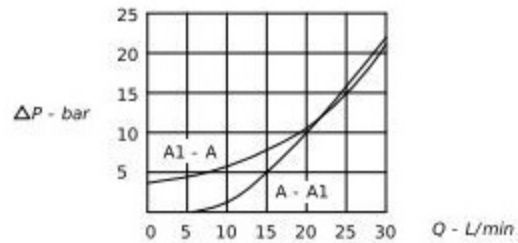


Diagramma perdite di carico  
Pressure drop curves



**MV\_06 - OV - - - - - 10**

**S** = STEEL  
**A** = ALUMINIUM

**D** = DOUBLE  
**A** = PORT A

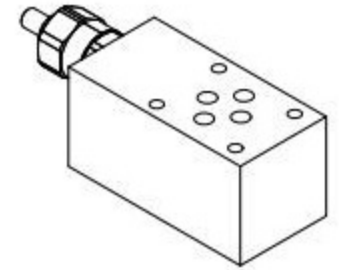
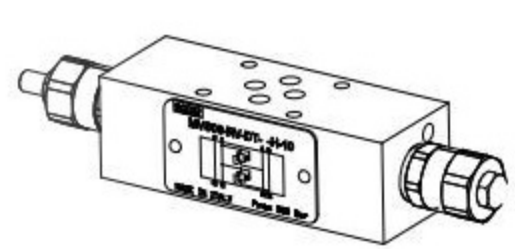
**N** = NORMAL  
**B** = BALANCED

SERIES

**2** = 60 - 220 bar  
**3** = 100 - 350 bar

**1** = 4:1 PILOT RATIO  
**2** = 8:1 PILOT RATIO

**VALVOLA MODULARE CETOP 3 REGOLATRICE DI PRESSIONE  
MODULAR PLATE NG6 RELIEF VALVE**



**MV\_06 - RV - - -**

