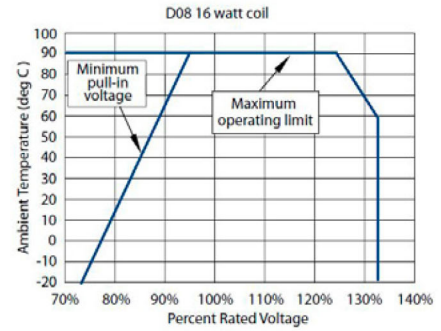


SPECIFICATIONS

- Duty cycle rating: 100% at 133% of rated voltage
- Magnet wire insulation: (200°C)
- Ambient temperature: -30 to 60 °C [-22 to 140 °F]
- Diodes are available; contact your Comatrol representative.
- Environmental protection: IP65
- All AC coils are internally rectified



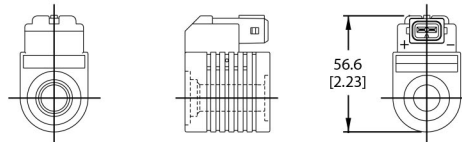
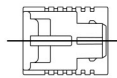
ELECTRICAL SPECIFICATIONS

16 watt coils

Voltage (V)	10 VDC	12 VDC	20 VDC	24 VDC	110 VAC	220 VAC
Resistance (Ohms) @ 20 °C [68 °F]	6.3	9	25	36	900	3600
Current draw (A) @ 20 °C [68 °F]	1.6	1.33	0.8	0.67	0.13	0.07
Color	Green	Grey	Blue	Black	Black	Black

TERMINALS

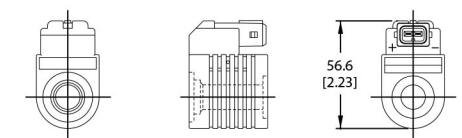
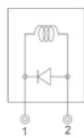
Amp Junior Timer
Code AJ



Part numbers

Voltage (V)	Power (W)	Part Number
10 VDC	16	D08-16W-10D-AJ
12 VDC	16	D08-16W-12D-AJ
20 VDC	16	D08-16W-20D-AJ
24 VDC	16	D08-16W-24D-AJ

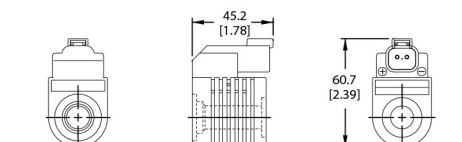
Amp Junior Timer
Code AJD



Part numbers

Voltage (V)	Power (W)	Part Number
10 VDC	16	D08-16W-10D-AJD
12 VDC	16	D08-16W-12D-AJD
20 VDC	16	D08-16W-20D-AJD
24 VDC	16	D08-16W-24D-AJD

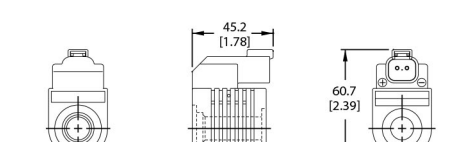
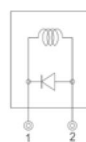
Deutsch
Code DE



Part numbers

Voltage (V)	Power (W)	Part Number
10 VDC	16	D08-16W-10D-DE
12 VDC	16	D08-16W-12D-DE
20 VDC	16	D08-16W-20D-DE
24 VDC	16	D08-16W-24D-DE

Deutsch
Code DED

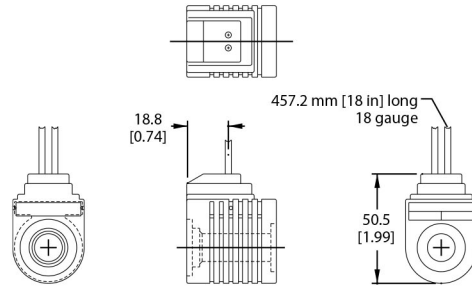


Part numbers

Voltage (V)	Power (W)	Part Number
10 VDC	16	D08-16W-10D-DED
12 VDC	16	D08-16W-12D-DED
20 VDC	16	D08-16W-20D-DED
24 VDC	16	D08-16W-24D-DED

TERMINALS
(continued)

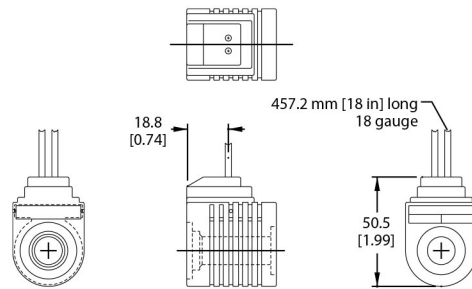
DIN 43650
Code H



Part numbers

Voltage (V)	Power (W)	Part Number
10 VDC	16	D08-16W-10D-H
12 VDC	16	D08-16W-12D-H
20 VDC	16	D08-16W-20D-H
24 VDC	16	D08-16W-24D-H
110 VAC	16	D08-16W-120A-H
220 VAC	16	D08-16W-240A-H

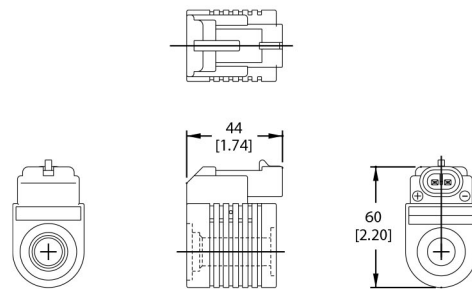
Lead wires
Code L



Part numbers

Voltage (V)	Power (W)	Part Number
10 VDC	16	D08-16W-10D-L
12 VDC	16	D08-16W-12D-L
20 VDC	16	D08-16W-20D-L
24 VDC	16	D08-16W-24D-L

MetriPak 150 Type 1
Code M2



Part numbers

Voltage (V)	Power (W)	Part Number
10 VDC	16	D08-16W-10D-M2
12 VDC	16	D08-16W-12D-M2
20 VDC	16	D08-16W-20D-M2
24 VDC	16	D08-16W-24D-M2