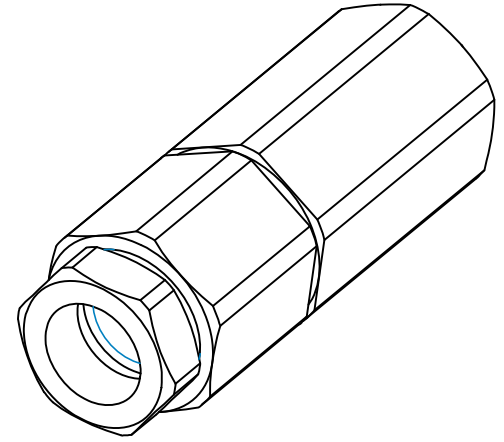
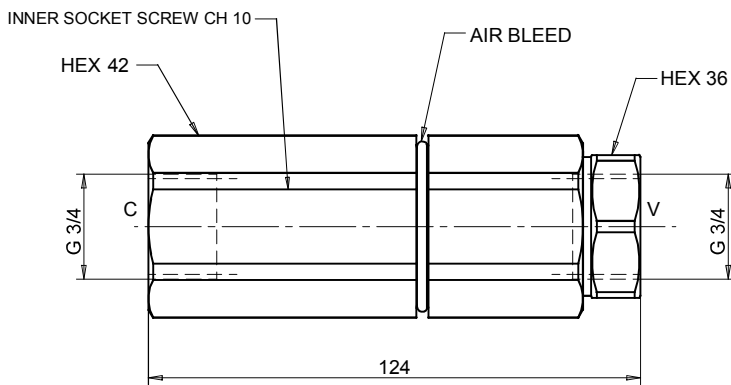
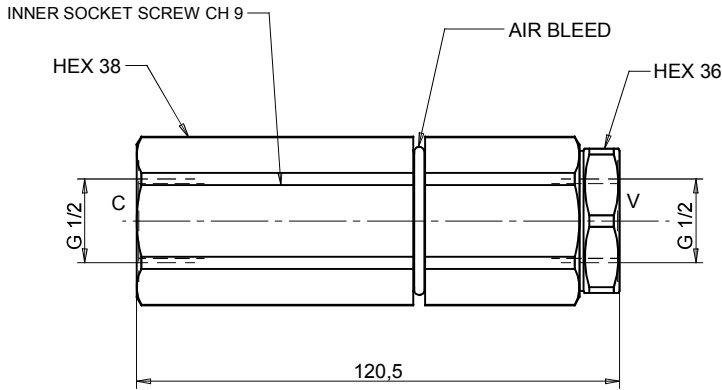
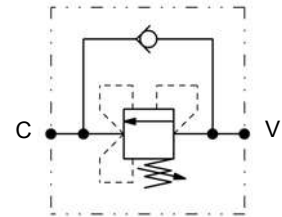


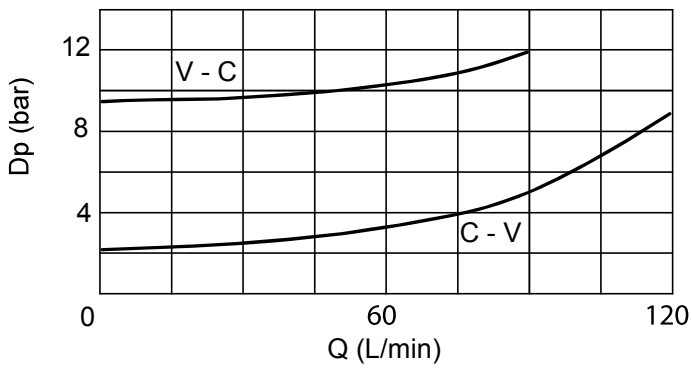
### Dimensions



### Hydraulic Symbol



### Curves



### Features

Size	03	04
Max Flow (lpm)	100	120
Max Pressure (bar)	350	350

**Materials:** Zinc plated steel body, hardened steel inner parts.

### Ordering Code

**SVLCC** -- --

Port Size BSP		LP-Spring (bar)	
<b>03</b>	1/2	03	04
<b>04</b>	3/4	<b>10</b>	50-140
		<b>20</b>	-
			80-250

**Ordering Code Example: SVLCC0310** = 1/2 Port Size - 50-140 bar setting range.